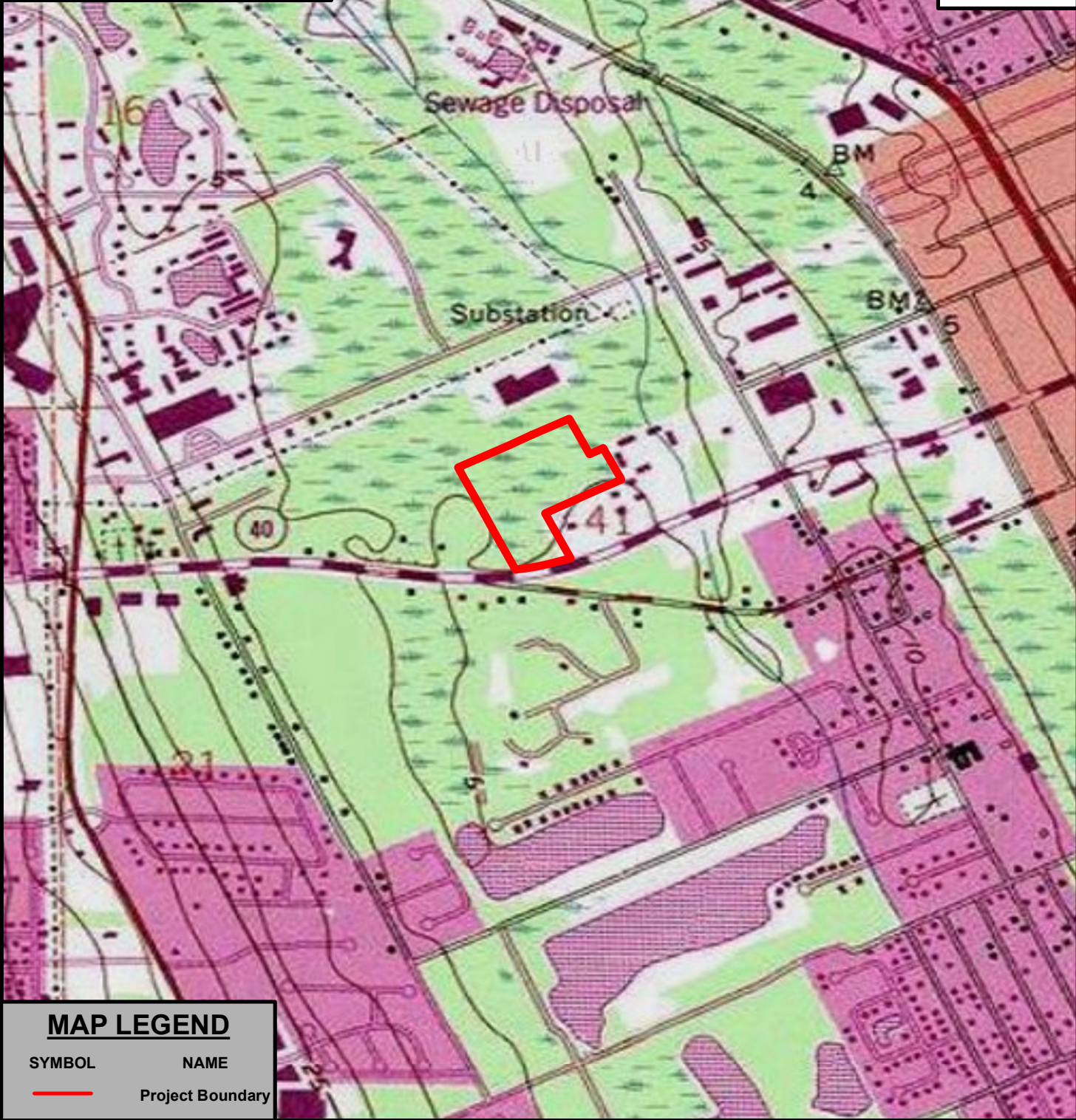
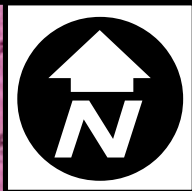


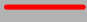
MAP LEGEND	
SYMBOL	NAME
	Project Boundary

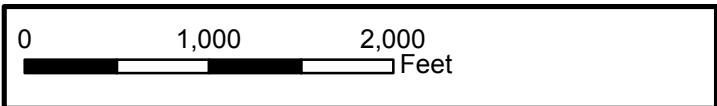


PROJECT #: 459.01.15 | DATE: 12/09/16 | FIGURE #: 1

**GRANADA POINT PHASE II
VOLUSIA COUNTY, FLORIDA
LOCATION MAP**

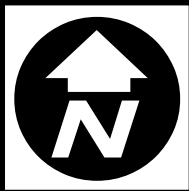


MAP LEGEND	
SYMBOL	NAME
	Project Boundary

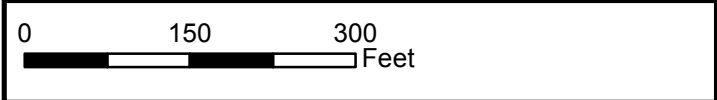


PROJECT #: 459.01.15 | DATE: 12/09/16 | FIGURE #: 3

**GRANADA POINT PHASE II
VOLUSIA COUNTY, FLORIDA
USGS TOPOGRAPHIC MAP**

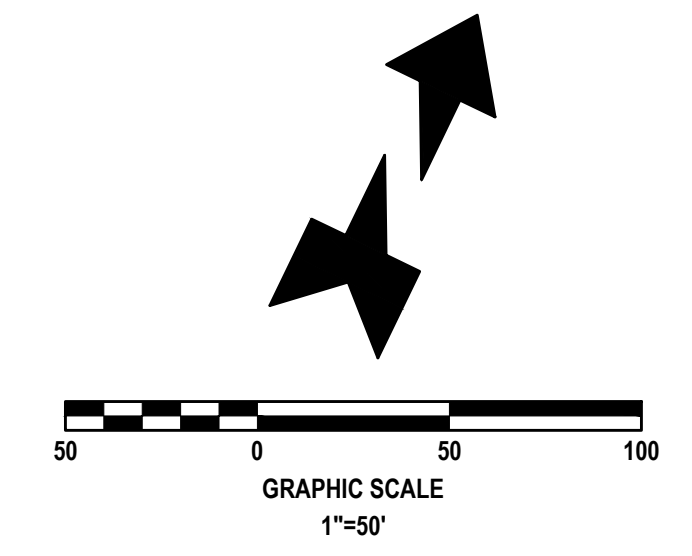
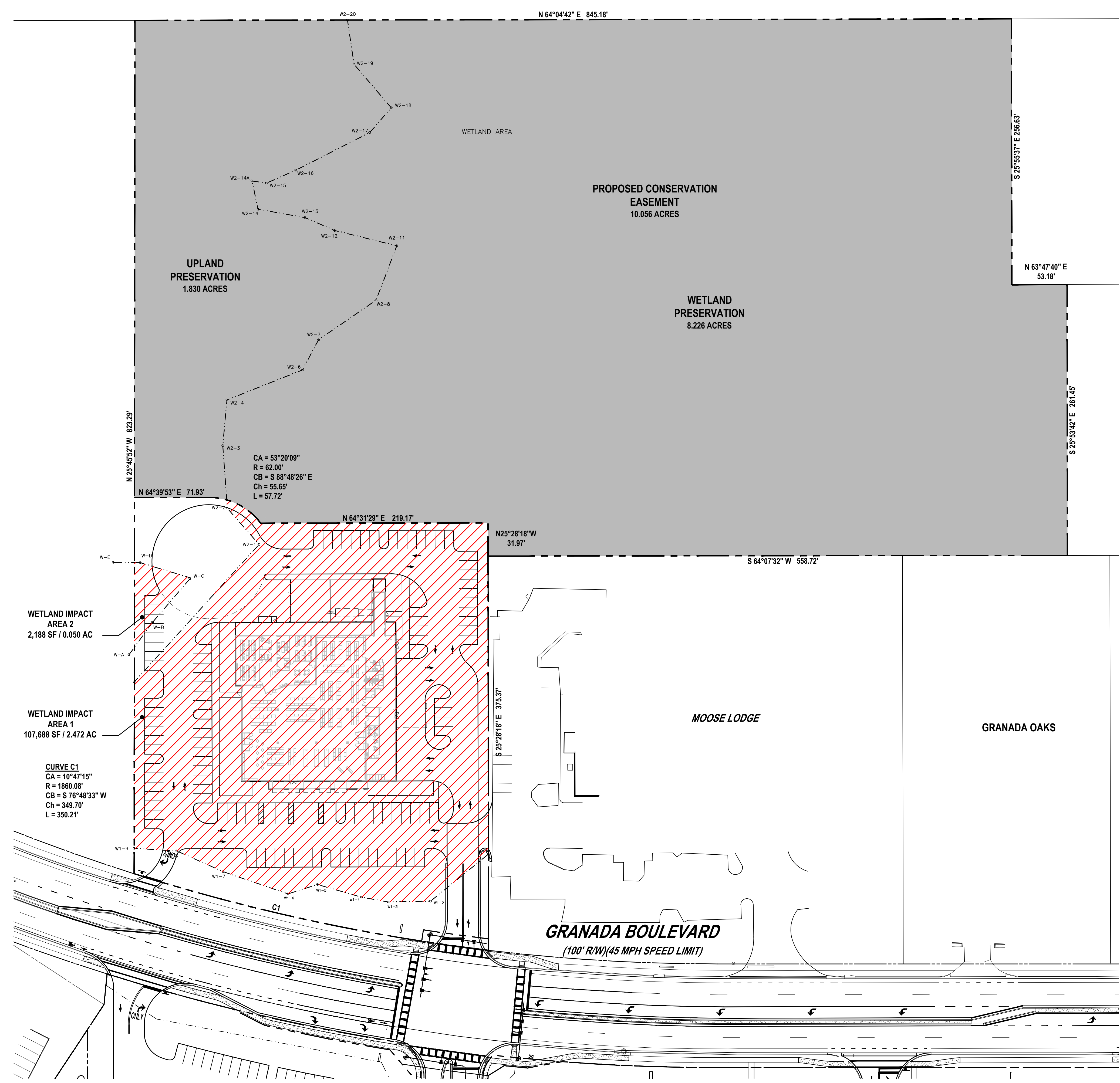


MAP LEGEND	
SYMBOL	NAME
	Project Boundary
	Moose Lodge
	Mixed Hardwoods
	Canal
	Mixed Wetland Hardwoods



PROJECT #: 459.01.15 | DATE: 12/09/16 | FIGURE #: 5

**GRANADA POINT PHASE II
VOLUSIA COUNTY, FLORIDA
FLUCFCS MAP**



LEGEND

- WETLAND IMPACT AREA
109,876 SF / 2.522 AC (TOTAL)
- CONSERVATION EASEMENT AREA
438,048 SF / 10.056 AC (TOTAL)

REVISIONS	
DATE	DESCRIPTION

NEWKIRK ENGINEERING

1370 North US1, Suite 204
Ormond Beach, Florida 32174
Phone (386) 290-7599
Harry@Newkirk-Engineering.com

Certificate of Authorization
No. 30209
© 2013

Civil Engineering
Land Development
Construction Engineering & Inspection

HOLUB DEVELOPMENT

1185 GRANADA BLVD.
SUITE 12
PO BOX 730086
ORMOND BEACH, FL 32173
PHONE: (386) 677-7617
FAX: (386) 677-7630

THIS DRAWING IS THE PROPERTY OF NEWKIRK ENGINEERING. ANY USE OR REPRODUCTION IN WHOLE OR PART IS PROHIBITED WITHOUT THE EXPRESSED WRITTEN CONSENT OF NEWKIRK ENGINEERING. COPYRIGHT © 2013 ALL RIGHTS RESERVED.

CONCEPTUAL WETLAND
IMPACT / PRESERVATION MAP
GRANADA POINTE - PHASE 2
WEST GRANADA BOULEVARD
ORMOND BEACH, FLORIDA 32174



NOT VALID UNLESS SIGNED AND SEALED

PROJECT No:	2015-93
DATE:	NOVEMBER 2016
DESIGN BY:	HHN
DRAWN BY:	DAB
CHECKED BY:	HHN
SCALE:	1"=50'
DRAWING NUMBER	

2